



检测报告

Test Report

报告编号(Report No.): SBW20110347

委托方: 深圳市迈翔科技有限公司

报告日期(Date): 2011-04-22

Applicant: SHENZHEN MOTTO TECHNOLOGY CO., LTD.

委托方地址: 深圳市宝安区龙华街道清泉路金博龙工业园E栋厂房10楼

Applicant Add.: 10 Floor, E Building, JinBolong Industrial Park, Qingquan Road,
Longhua Town, Baoan District, Shenzhen China

样品信息: 客户所送样品为 功率电感

Sample Information: The submitted sample(s) said to be Power inductor

型号/规格(Model/Style): WSA TYPE, WSB TYPE, WSC TYPE, WSD TYPE, WSE TYPE, WBD TYPE,
WBL TYPE, WBH TYPE, WBP TYPE, WBF TYPE, LH TYPE, LHK TYPE, LHP TYPE, MGGB TYPE,
MGCI TYPE, MPA TYPE, MRC TYPE, MTC TYPE, NL TYPE, MQ TYPE, MS TYPE, AL TYPE,
RH TYPE, WA TYPE

接样日期: 2011-04-18

Sample Receiving Date: Apr.18, 2011

检测日期: 2011-04-18 到 2011-04-22

Testing Period: Apr.18, 2011 to Apr.22, 2011

根据客户要求进行测试, 具体测试结果详见下页

Tests conducted: As requested by the applicant, for details refer to attached page(s)

深圳市天鉴检测技术服务有限公司授权签字人

Signed for and on behalf of
Skyte Testing Services Shenzhen Co., Ltd.



涂卫东(David Tu)
总经理(General Manager)



检测报告

Test Report

报告编号(Report No.): SBW20110347

检测结果 (Test Result)

1. RoHS Directive (2002/95/EC)

检测项目 Test Item	编号及检测结果 (mg/kg) Sample No. & Test Result	欧盟RoHS限值 EU RoHS Limit
	1/2/3/4/5/6	(mg/kg)
镉 Cadmium (Cd)	N.D.	100
铅 Lead (Pb)	26	1000
汞 Mercury (Hg)	N.D.	1000
六价铬 Chromium (VI) (Cr ⁶⁺)	N.D.	1000
多溴联苯之和 Sum of Polybrominated Biphenyls (PBBs)	N.D.	1000
一溴联苯 Monobromobiphenyl (MonoBB)	N.D.	—
二溴联苯 Dibromobiphenyl (DiBB)	N.D.	—
三溴联苯 Tribromobiphenyl (TriBB)	N.D.	—
四溴联苯 Tetrabromobiphenyl (TetraBB)	N.D.	—
五溴联苯 Pentabromobiphenyl (PentaBB)	N.D.	—
六溴联苯 Hexabromobiphenyl (HexaBB)	N.D.	—
七溴联苯 Heptabromobiphenyl (HeptaBB)	N.D.	—
八溴联苯 Octabromobiphenyl (OctaBB)	N.D.	—
九溴联苯 Nonabromobiphenyl (NonaBB)	N.D.	—
十溴联苯 Decabromobiphenyl (DecaBB)	N.D.	—
多溴联苯醚之和 Sum of Polybrominated Diphenyl Ethers(PBDEs)	N.D.	1000
一溴联苯醚 Monobromodiphenyl Ether (MonoBDE)	N.D.	—
二溴联苯醚 Dibromodiphenyl Ether (DiBDE)	N.D.	—
三溴联苯醚 Tribromodiphenyl Ether (TriBDE)	N.D.	—
四溴联苯醚 Tetrabromodiphenyl Ether (TetraBDE)	N.D.	—
五溴联苯醚 Pentabromodiphenyl Ether (PentaBDE)	N.D.	—
六溴联苯醚 Hexabromodiphenyl Ether (HexaBDE)	N.D.	—
七溴联苯醚 Heptabromodiphenyl Ether (HeptaBDE)	N.D.	—
八溴联苯醚 Octabromodiphenyl Ether (OctaBDE)	N.D.	—
九溴联苯醚 Nonabromodiphenyl Ether (NonaBDE)	N.D.	—
十溴联苯醚 Decabromodiphenyl Ether (DecaBDE)	N.D.	—



检测报告

Test Report

报告编号(Report No.): SBW20110347

2. 卤素 (Halogen)

检测项目 Test Item		编号及检测结果 Sample No. & Test Result	单位 Unit
		1/2/3/4/5/6	
卤素	氟 Fluorine (F)	N.D.	mg/kg
	氯 Chlorine (Cl)	N.D.	mg/kg
Halogen	溴 Bromine (Br)	N.D.	mg/kg
	碘 Iodine (I)	N.D.	mg/kg

3. PFOS*

检测项目 Test Item	编号及检测结果 Sample No. & Test Result	单位 Unit
	1/2/3/4/5/6	
全氟辛烷磺酰基化合物 Perfluorooctane sulphonates (PFOS)	N.D.	mg/kg

备注 (Remark):

- (1) N.D.=Not detected, less than MDL (未检出, 小于方法检测限)
- (2) mg/kg=milligram per kilogram
- (3) MDL=Method detection limit (方法检测限)
- (4) 根据客户要求, 对送检样品进行混合测试
As per the applicant's request, the mixed testing were conducted.
- (5) *该项目经客户同意分包测试 (The test item was tested in subcontract lab with the applicant's confirmation)

测试样品描述 (Tested Sample Description):

1. 功率电感(整体混测) / Power inductor (entirety mixed) (WBH)
2. 功率电感(整体混测) / Power inductor (entirety mixed) (LH)
3. 功率电感(整体混测) / Power inductor (entirety mixed) (LHP)
4. 功率电感(整体混测) / Power inductor (entirety mixed) (WBD)
5. 功率电感(整体混测) / Power inductor (entirety mixed) (WSA)
6. 功率电感(整体混测) / Power inductor (entirety mixed) (WBL)



检测报告

Test Report

报告编号(Report No.): SBW20110347

检测方法 (Test Method)

1. RoHS Directive (2002/95/EC)

检测项目 Test Item	检测方法 Test Method	方法检测限 MDL
镉 Cadmium (Cd)	根据IEC 62321:2008方法, 用电感耦合等离子体原子发射光谱仪或原子吸收光谱仪进行测定 As per IEC 62321:2008, determined by inductively coupled plasma atomic emission spectrometer or atomic absorption	2mg/kg
铅 Lead (Pb)	根据IEC 62321:2008方法, 用电感耦合等离子体原子发射光谱仪或原子吸收光谱仪进行测定 As per IEC 62321:2008, determined by inductively coupled plasma atomic emission spectrometer or atomic absorption	2mg/kg
汞 Mercury (Hg)	根据IEC 62321:2008方法, 用电感耦合等离子体原子发射光谱仪进行测定 As per IEC 62321:2008, determined by inductively coupled plasma atomic emission spectrometer	2mg/kg
六价铬 Chromium (VI) (Cr ⁶⁺)	根据IEC 62321:2008方法, 用紫外-可见分光光度计测定 As per IEC 62321:2008, determined by UV-visible spectrophotometer	1mg/kg
多溴联苯 Polybrominated Biphenyls (PBBs)	根据IEC 62321:2008方法, 用气相色谱质谱联用仪测定 As per IEC 62321:2008, determined by gas chromatographic-mass spectrometer	5mg/kg
多溴联苯醚 Polybrominated Diphenyl Ethers (PBDEs)	根据IEC 62321:2008方法, 用气相色谱质谱联用仪测定 As per IEC 62321:2008, determined by gas chromatographic-mass spectrometer	5mg/kg

2. 卤素 (Halogen)

检测项目 Test Item	检测方法 Test Method	方法检测限 MDL
卤素(氟、氯、溴、碘)含量 Halogen (F, Cl, Br, I) content	根据EN14582-2007方法处理样品, 用离子色谱仪测定 As per EN14582-2007, determined by ion chromatograph	50mg/kg

检测报告

Test Report

报告编号(Report No.): SBW20110347

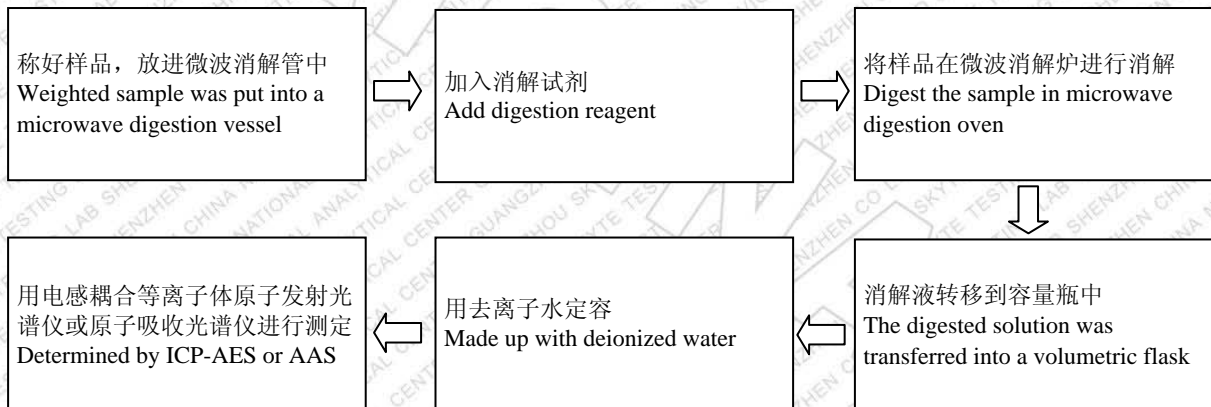
3. PFOS

检测项目 Test Item	检测方法 Method	方法检测限 MDL
全氟辛烷磺酰基化合物 Perfluorooctane sulphonates (PFOS)	根据内部方法处理样品,采用液相色谱质谱联用仪进行测定 As per in-house method for sample treatment and determined by Liquid Chromatography - Mass Spectrometry	5 mg/kg

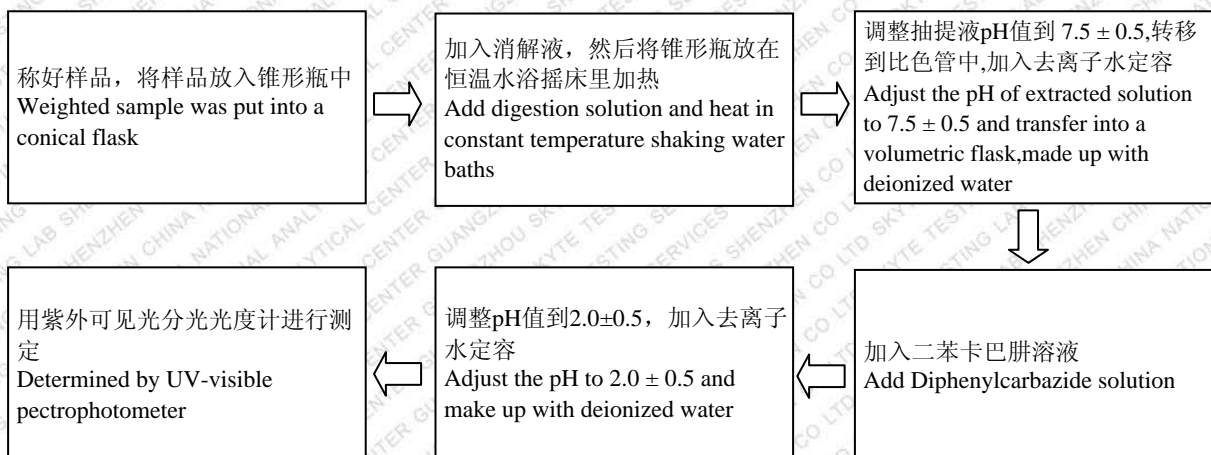
检测流程图 (Measurement Flowchart)

1. RoHS Directive (2002/95/EC)

a. 镉、铅、汞测试(Test for Cd / Pb /Hg contents)



b. 六价铬测试(Test for Cr⁶⁺ content)

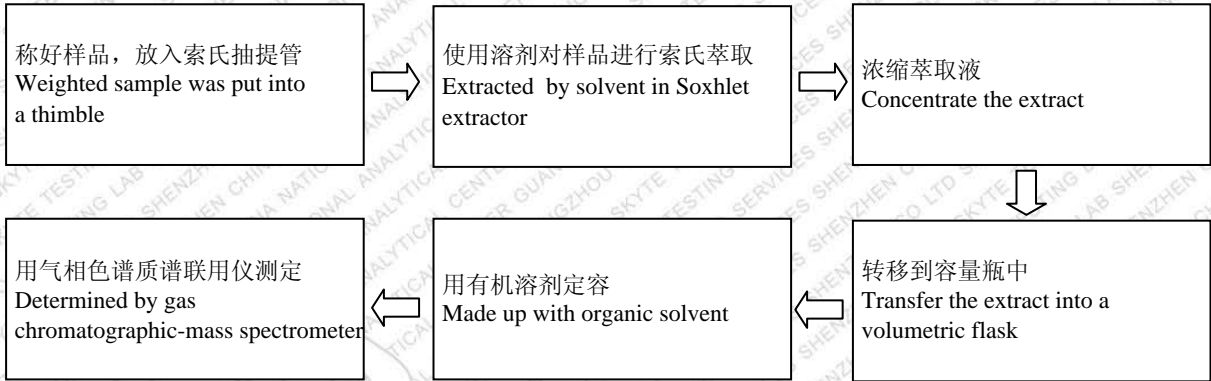


检测报告

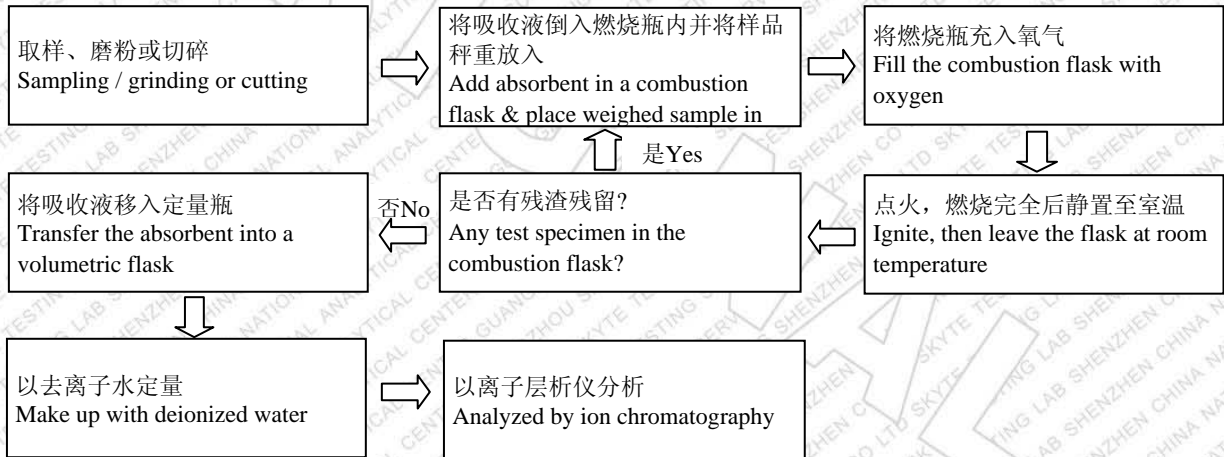
Test Report

报告编号(Report No.): SBW20110347

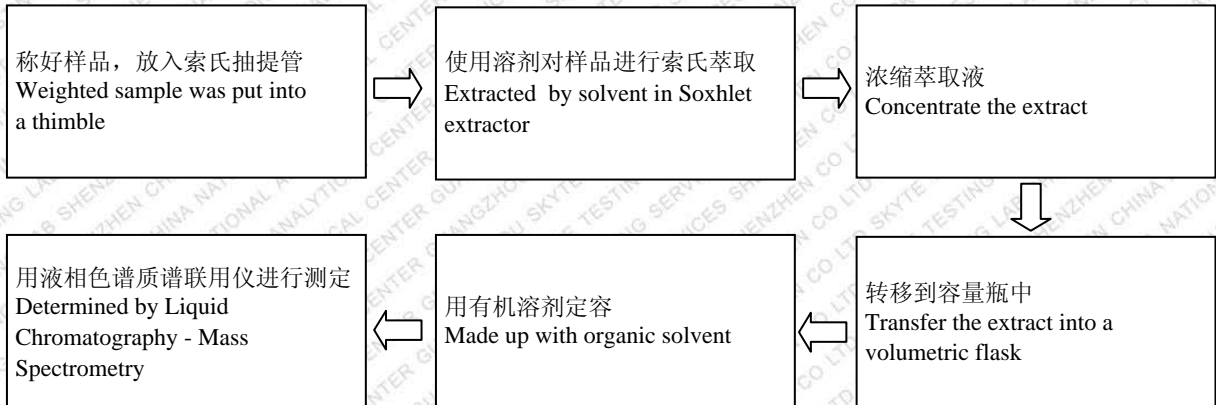
c. 多溴联苯、多溴联苯醚 测试(Test for PBBs/PBDEs contents)



2. 卤素 (Halogen)



3. PFOS



检测报告

Test Report

报告编号(Report No.): SBW20110347

样品照片 (Sample Photo)



SBW20110347

(以下空白)
(End of report)

相关测试服务条款请见背面

Attention is drawn to the terms and conditions printed overleaf

Serial No.: 544065